

## SM-24 Geophone Element

Where Quality Data Starts

### Features

- Tight specification, low-distortion geophone
- Extended spurious over 240 Hz, allowing full bandwidth at 2-ms sampling
- Backwards compatible with SM-4, SM-4 Superphone™ range, and SM-24ST
- Horizontal element available for shear-wave and 3-C recording.
- 3-year non-prorated warranty
- Lowest lifecycle cost of ownership in the industry
- Installed base of over 8 million worldwide (est.)



The SM-24 geophone element is designed to offer the highest performance in seismic exploration based upon field-proven I/O Sensor technology. Low distortion, combined with excellent specifications, provide high-fidelity data in 2-D and 3-D surveys. The extended bandwidth allows the full potential of 2-ms/24-bit recording systems to be realized.

The tight specifications, unique element design, and exceptional quality of the Sensor SM-24 make it the lowest life cycle cost of ownership geophone in the industry.

Applications: 2-D & 3-D seismic exploration with bandwidth from 10 Hz up to 240 Hz.

Implementation: Can be installed in a variety of I/O Sensor geophone cases.



## Specifications: SM-24 Geophone Element

### Frequency

Natural frequency	10 Hz
Tolerance	± 2.5%
Maximum tilt angle for specified Fn	10°
Typical spurious frequency	>240 Hz

### Distortion

Distortion coil to case velocity with 17.78mm/s (0.7 in/s) p.p.	<0.1%
Distortion measurement frequency	12 Hz
Typical distortion (string of 12 in series, measured at 12 Hz)	0.03 %

### Damping

Open circuit (typical)	0.25
Damping calibration- shunt resistance	1,339 Ω
Damping with calibration shunt	0.6
Tolerance with calibration shunt	+ 5 %, - 0 %

### Sensitivity

Sensitivity	28.8 V/m/s (0.73 V/in/s)
Tolerance	± 2.5 %
RtBcfn	6,000 Ω Hz
Moving mass	11 g (0.38 oz)
Max coil excursion p.p.	2 mm (0.08 in)

### Coil Resistance

Standard	375 Ω
Tolerance	+/- 2.5 %

### Physical Characteristics

Diameter	25.4 mm (1 in)
Height	32 mm (1.26 in)
Weight	74 g (2.6 oz)
Operating temperature range	-40°C to +100°C (-40°F to +212°F)

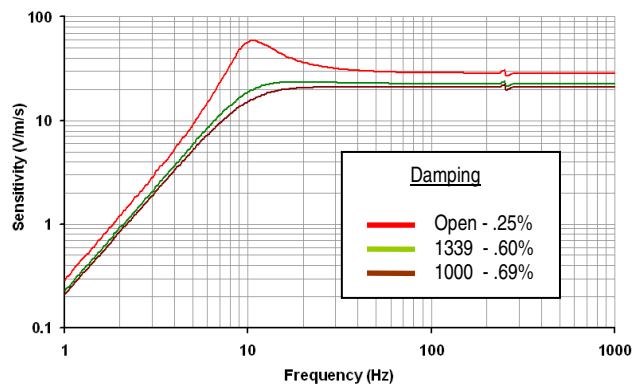
### Warranty Period\*

3 years

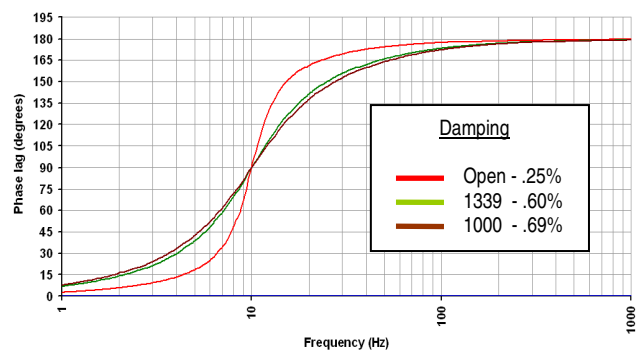
\* Warranty excludes damage caused by high voltage and physical damage to the element case.

All parameters are specified at +20°C in the vertical position unless otherwise stated.

**Geophone Response Curve – SM-24 10 Hz**



**Geophone Phase Lag – SM-24 10 Hz**



## Ordering Information

### SM-24

SM-24/U-B 10 Hz 375 Ohm  
(upright basic unit with insulating disc)

P/N 1004117

#### Europe

I/O Sensor Nederland bv  
Fax +31 71 561 7145  
Phone +31 71 560 1234

#### United States - Stafford, TX

Input/Output Inc.  
Fax +1 281 879 3626  
Phone +1 281 933 3339

#### England

Input/Output Inc.  
Fax +44 1603 415143  
Phone +44 1603 481020

#### Web Site

[www.geophone.com](http://www.geophone.com)  
[www.i-o.com](http://www.i-o.com)